



303 SOUTH ROXBORO STREET

NOW LEASING

4,200 SF of pre-eminent **Class A** office, retail + R&D space in a **historic, revitalized** setting in the core of **downtown Durham**



- 1 Receiving Room Fully Leased
- 2 The Prizery 4,200 RSF for lease, Suites of ~2,700 RSF and ~1,500 RSF available
- 3 Dibrell A Warehouse Fully Leased
- 4 Dibrell B Warehouse Fully Leased
- 5 Dibrell C Warehouse Fully Leased



- ### FEATURES
- Abundant natural light
 - High ceilings
 - Exposed brick
 - Heart-pine beams
 - Flexible floor plans
 - Smart, green design
 - Monitored, electronic security system
 - Secure, keyless electronic entry
 - 24-hour access
 - Reception desk and lobby
 - Lobby attendant-security guard

COMMERCIAL LEASING

Tommy Rodwell
919.967.7700 x112
tommy.rodwell@scientificproperties.com



SCIENTIFIC PROPERTIES
807 E. Main Street, Suite 2-140
Durham, NC 27701
www.scientificproperties.com



VENABLE CENTER

303 SOUTH ROXBORO STREET



CENTRAL, PROMINENT LOCATION

Located at the corner of South Roxboro & East Pettigrew Streets

Convenient, direct access to Highway 147, I-85 and I-40

High street visibility on the main road entering downtown Durham

Across the street from the new Judicial Complex

Close access to the fare-free Bull City Connector bus route connecting Duke and points downtown

Walking distance to downtown entertainment, dining, and retail options in the American Tobacco and Brightleaf Square districts

15 minute drive from RDU

10 minute drive to RTP

CONTACT US

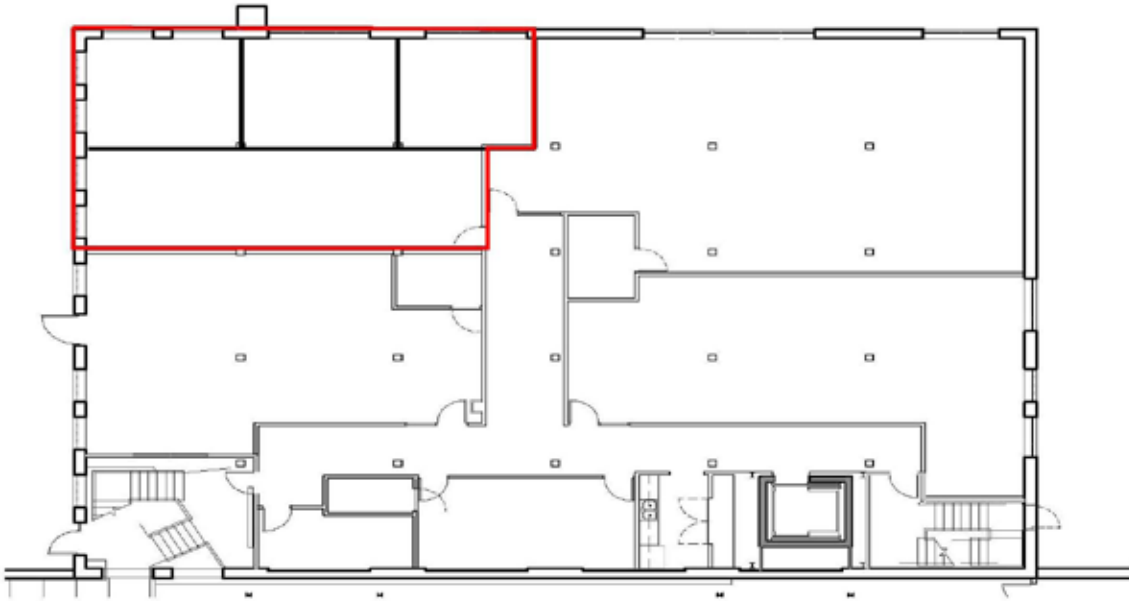
Tommy Rodwell
919.967.7700 x112
tommy.rodwell@scientificproperties.com

VISIT US ONLINE

<http://www.venablecenter.com>



Prizery 1st Floor - ~1,500 RSF



Prizery 2nd Floor - ~2,700 RSF

